

FDM
technology

DISTROMIX B

The Distromix B range of high-shear mixers represents an important step forward in high shear mixer design. Based on Maelstrom APT's patented Fluid Division Mixing (FDM) technology, Distromix B machines offer increased shearing action over conventional rotor/stator mixers. This is due to the larger number of shearing surfaces in the mixing head and the effects of turbulent shear in the cavity regions. Together with the exceptional blending action of inter-cavity transfer and centrifugal self-pumping, the Distromix B really is an all-round performer for demanding high-shear applications.

batch
mixer range



DISTROMIX B

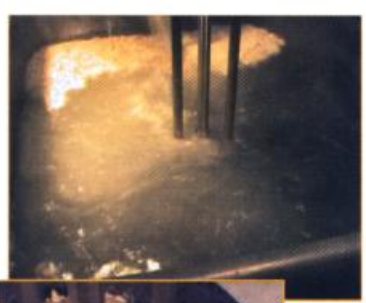


"the future of high-shear mixing

for faster, better results"

- Dispersing
- Homogenising
- Rapid blending
- De-agglomerating
- Emulsifying
- Reacting

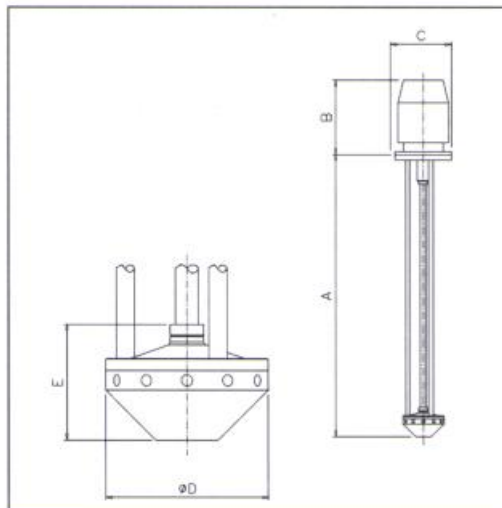
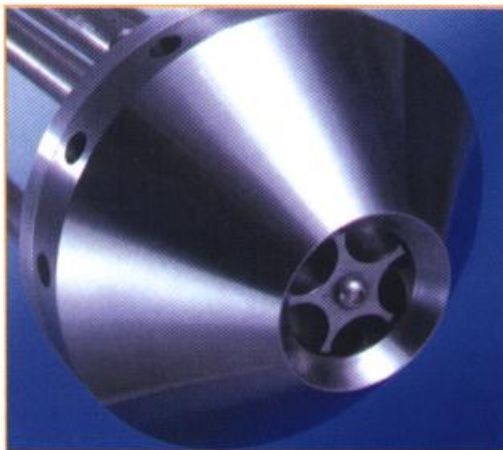
- Intensive mechanical and fluid shearing actions - supplying:
 - up to 5x more specific energy into the process fluid than conventional rotor-stator mixers and giving better quality results, faster
- Centrifugal self-pumping - can handle a wide viscosity range
- Adjustable shear gap for different mixing tasks
 - Standard models - adjusted during setup (stationary)
 - Advanced models - on-the-fly adjustment
- Flexible - accessories are available to extend abilities still further
- Simple, rugged construction and easy maintenance
- Relatively safe - sharp moving surfaces are enclosed



A 2kW Distromix B mixing a 10% guar gum slurry

High shear
Adjustable
Rugged
Efficient





		60 Series	100 Series	400 Series
Typical Dimensions (for medium-energy machines)		mm		
A (>1000mm may require a steady)		150-500	500-1500	800-2500
B		185-235	235-500	300-1050
C		140-200	200-350	250-660
D		50	150	400
E		35	105	320
Maximum flowrate (base configuration)	tonnes/hr	1.5	15	150
Maximum flowrate (with optional High-Flow head)	tonnes/hr	7.5	75	750
Viscosity range (approx.)	Pa.s (cP)	0.0001 (0.1) - 50 (50,000)		
Motor power range (standard sizes ¹)	kW (hp)	0.37 (0.5) - 1.1 (1.5)	0.75 (1) - 11 (15)	4 (5.5) - 110 (150)
Motor-speed (typical maximum)	rpm	3000	3000	3000
Construction materials (standard)				
Wetted metal parts		316 stainless steel		
Lower bearing		Polymer or sealed rolling element bearings - to suit application		
Mounting & supports		painted structural steel		

¹ Larger and non-standard motors available on request

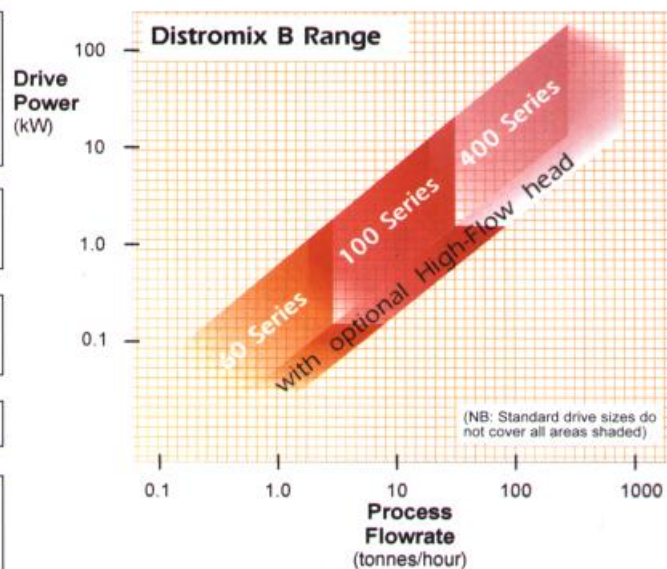
batch
mixer range



Options

Construction materials	
wetted parts	Hardened stainless, toolsteels, titanium, aluminium, polymers
non-wetted parts	316 stainless steel, aluminium
High-Flow head	A rotor and stator pair with a special internal centrifugal pumping stage fitted to increase flow in the vessel
Impellers	A range of downthrust and upthrust impellers fitted to the rotating shaft to improve powder draw-down or suspension.
Seals	Single or double mechanical seals
Drives	<ul style="list-style-type: none"> - Electric motors to any IP rating - EExd and explosion proof motors - Air motors - Painted or stainless steel finishes - AC inverters and DC control systems

The physical and performance specifications in this leaflet are not intended for accurate sizing and selection of machines. Please contact Maelstrom APT or its agents directly for a selection appropriate to any particular mixing application.



Maelstrom
Advanced Process Technologies

First Floor, 59-61 High Street West, Glossop
Derbyshire SK13 8AZ, UK
Tel> +44 (0)1457 867777
Fax> +44 (0)1457 862207
email> sales@maelstrom-apt.com
web> www.maelstrom-apt.com

